

Transportation for Nanyang Hotel

Nanyang Hotel

Address: No.1 Xingqing South Road, Beilin District, Xi'an City

Tel: 029-87665566

Email: 20841399@qq.com

Website: www.jdnyhotel.com

Contact: Li Xiangyun 17791635435

1. Xi'an Xianyang International Airport

The hotel is 45 kilometers away from Xi'an Xianyang International Airport, and the transportation options are as follow:

- (1) Taxi: The taxi fare is around 150 rmb, and it will cost about 60 minutes;
- (2) Airport shuttle and bus: Take the airport shuttle to Xi'an Jianguo Hotel(西安建国饭店), which costs 26 rmb. Then transfer to Bus No. 401 and get off at Shapo Village (Southeast Gate of Jiaotong University) Station(沙坡村站). The whole journey takes about 80 minutes.
- (3) Bus and subway: Take the Gaoxin Business Express bus to Zhicheng Libai Hotel (志诚丽柏酒店), about 24 minutes, get off at Xiyaotou Station (西窑头站), then transfer to Line 5 subway to Xi'an East Station, take 11 stations, about 26 minutes, get off at Yanxiang Road North Exit Station(雁翔路北口站), and exit from Exit A. Walk for about 7 minutes to Nanyang Hotel, the whole journey takes about 75 minutes, and costs 29 yuan.

2. Xi'an Railway Station

The hotel is 6 kilometers away from Xi'an Railway Station, and the transportation options as follow are available:

- (1) Taxi: The taxi fare is about 15 rmb, and it will cost about 20 minutes;
- (2) Bus: Take Bus No. 607 at the railway station and get off at Shapo Village (Southeast Gate of Jiaotong University) station (沙坡村站). The whole journey takes about 30 minutes.
- (3) Subway: Take the subway line 4 towards the direction of Aerospace New City for a total of four stops, about 8 minutes. Then, get off at the University of Architecture and Technology •Lijiacun Station (建筑科技大学 •李家村站), and transfer to the line 5 towards Xi'an East Station. Take two stations, about 5 minutes, and get off at

Yanxiang Road North (雁翔路北口站) Exit D and walk for about 7 minutes to reach the Nanyang Hotel. The whole journey takes about 23 minutes, and costs 3 yuan.

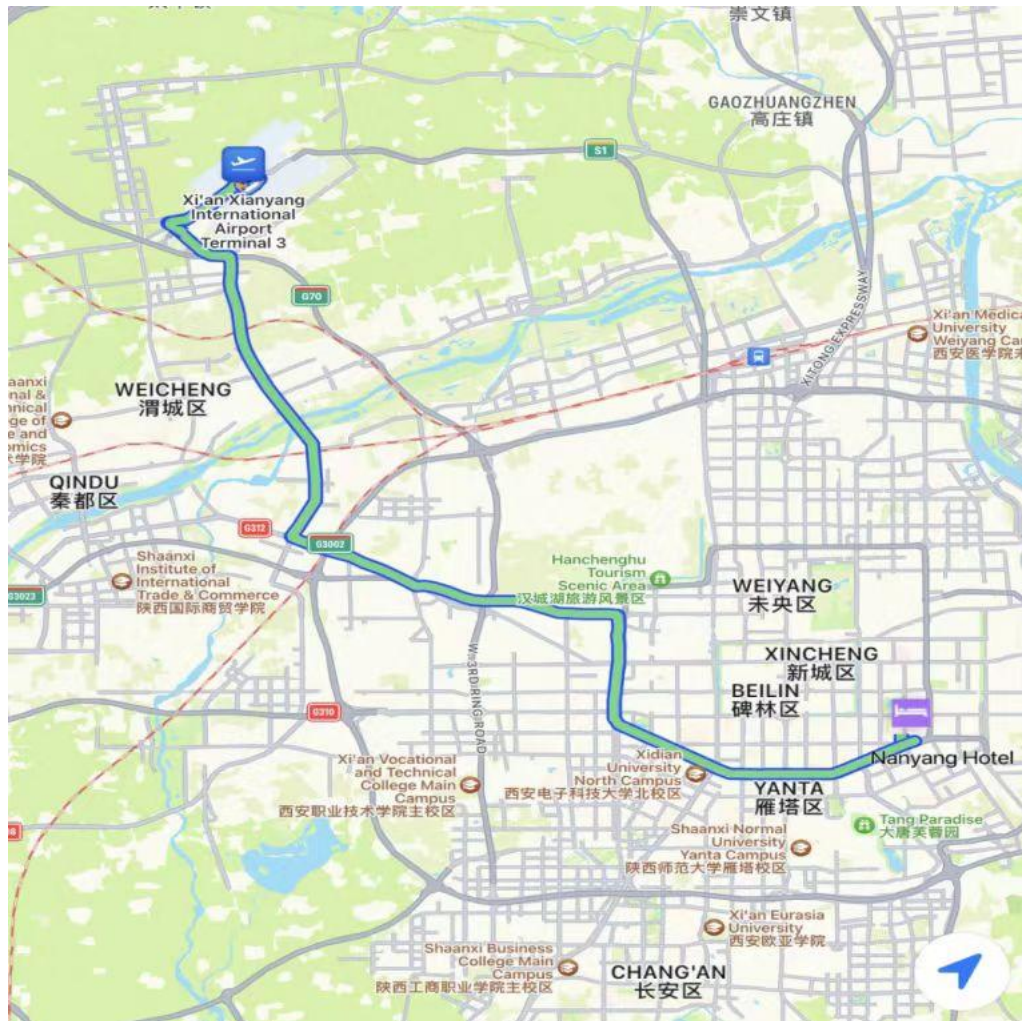
3. Xi'an North Railway Station (High Speed Rail):

The hotel is 17 kilometers away from Xi'an North Railway Station (high-speed railway) and can choose the following transportation:

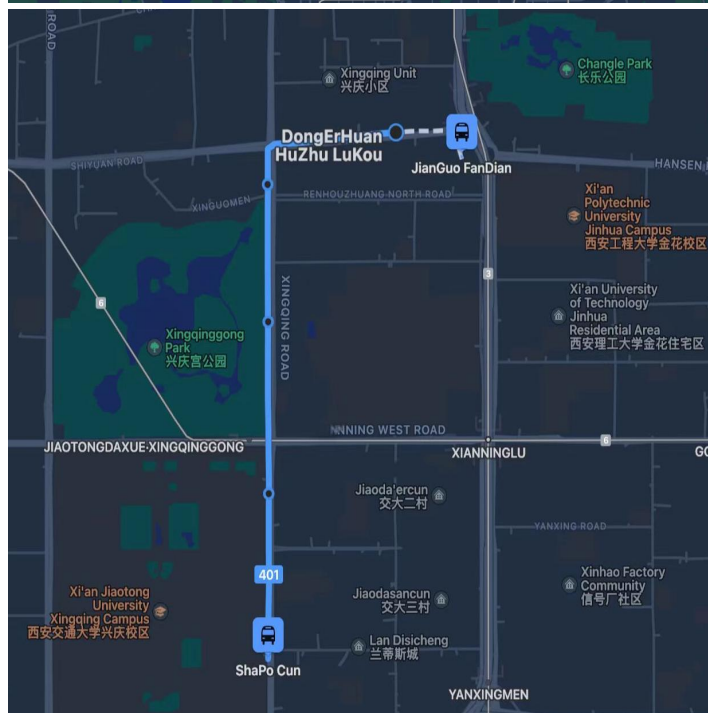
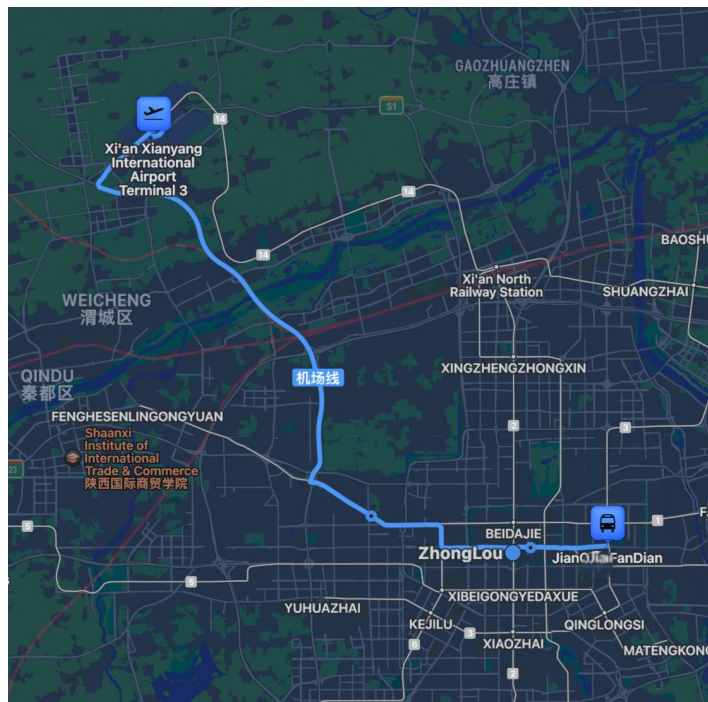
- (1) Taxi: The taxi fare is about 60 yuan, and the journey is about 30 minutes.
- (2) Subway: Take the subway line 2 heading towards the south of Weiqu for a total of 12 stations, about 28 minutes. Get off at Nanshaomen Station (南稍门站) and transfer to line 5 heading towards Xi'an East Station. Take 4 stations, about 8 minutes, get off at Yanxiang Road North (雁翔路北口站) Exit D and walk for about 7 minutes to Nanyang Hotel. The whole journey takes about 48 minutes, and costs 5 yuan.

1. Xi'an Xianyang International Airport

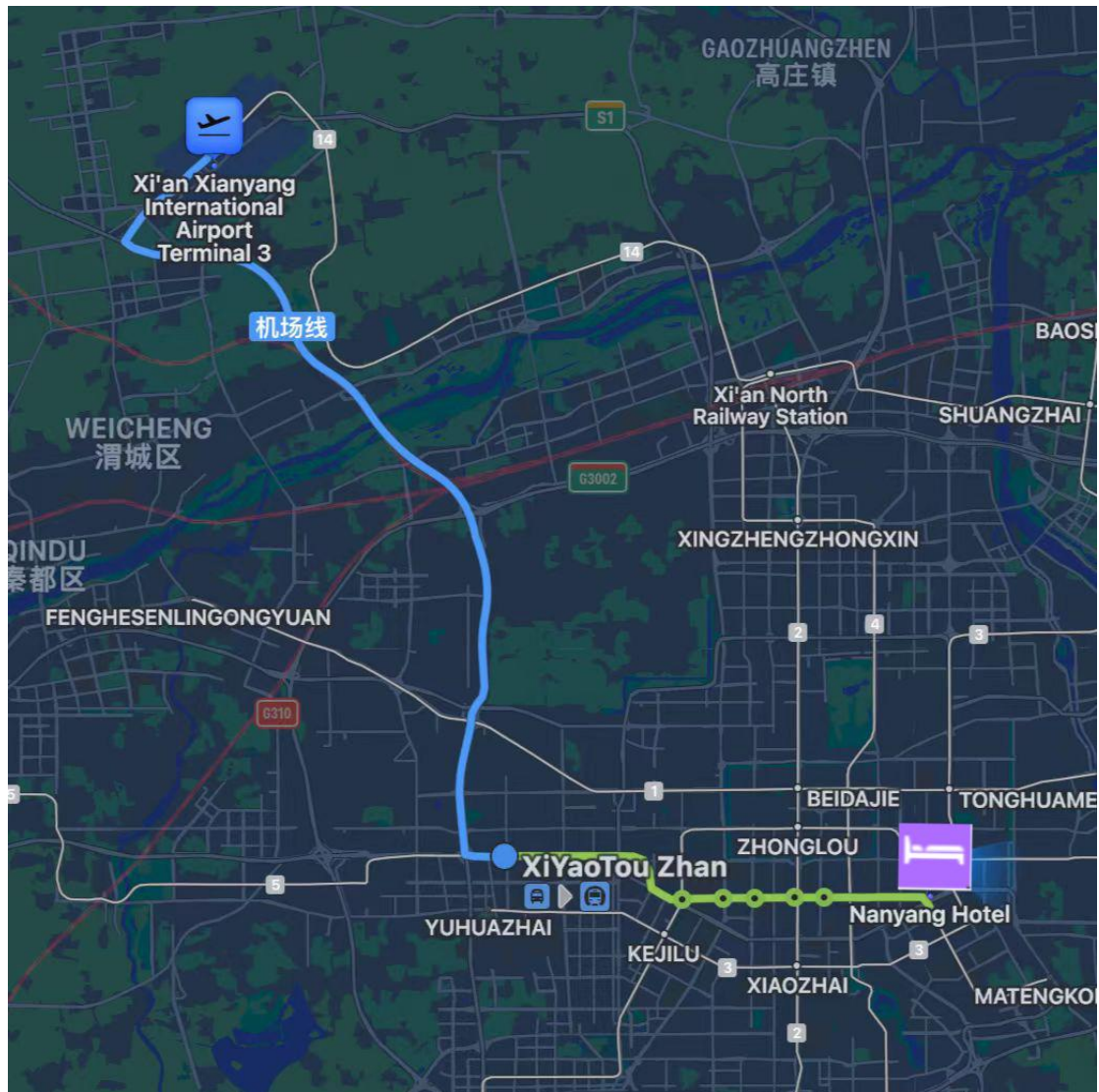
(1) Taxi



(2) Airport shuttle and bus

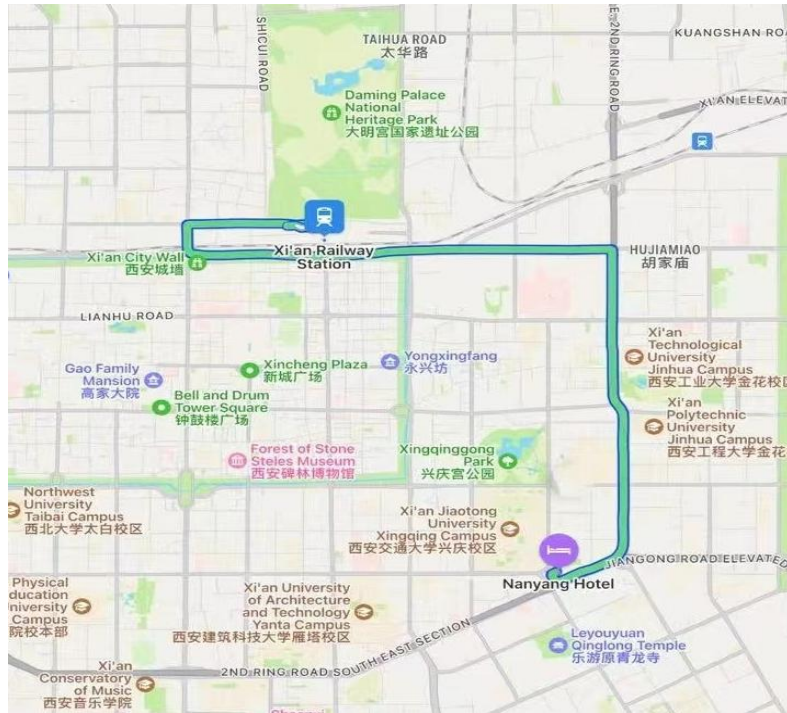


(3) Bus and subway

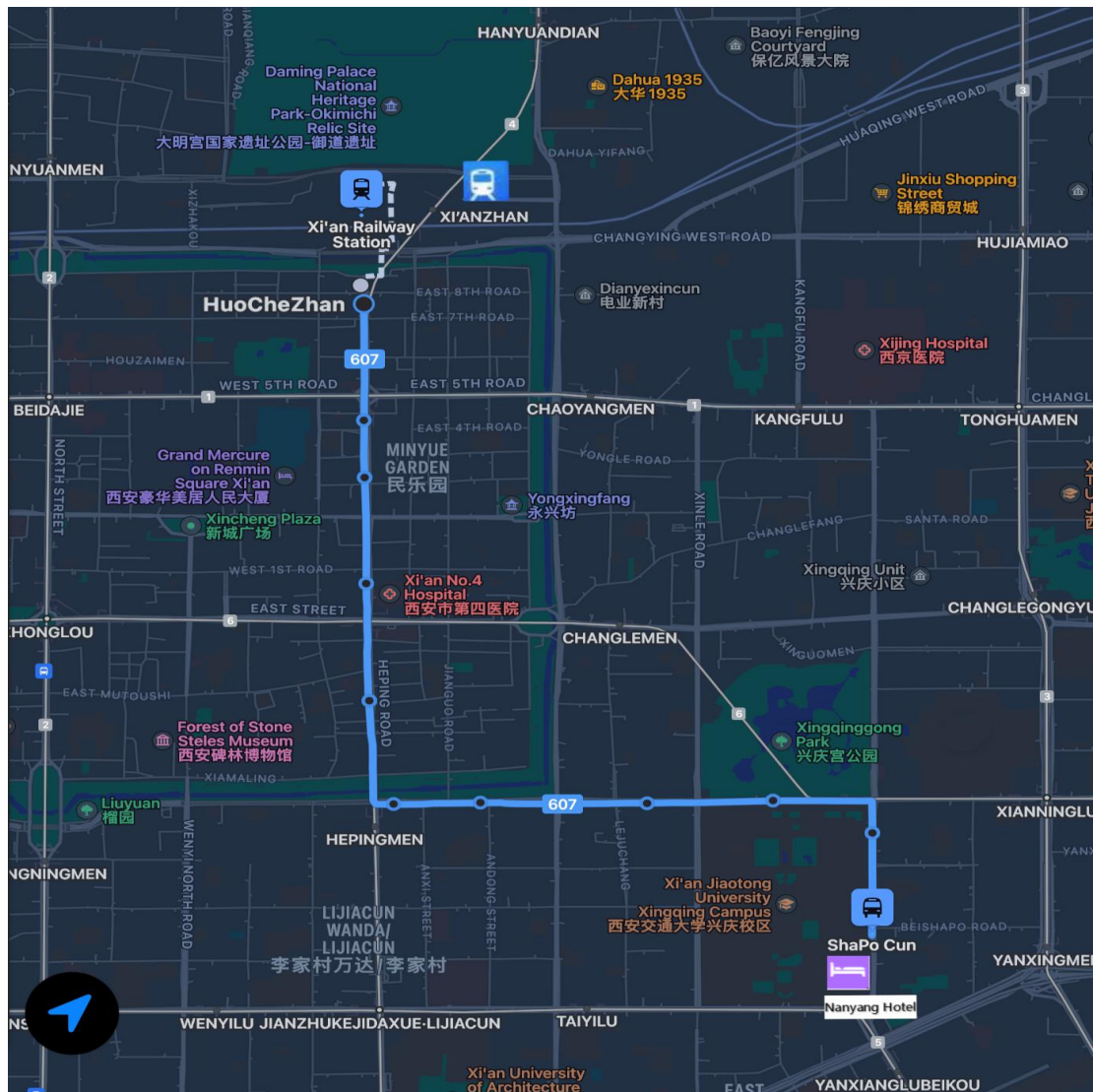


2. Xi'an Railway Station

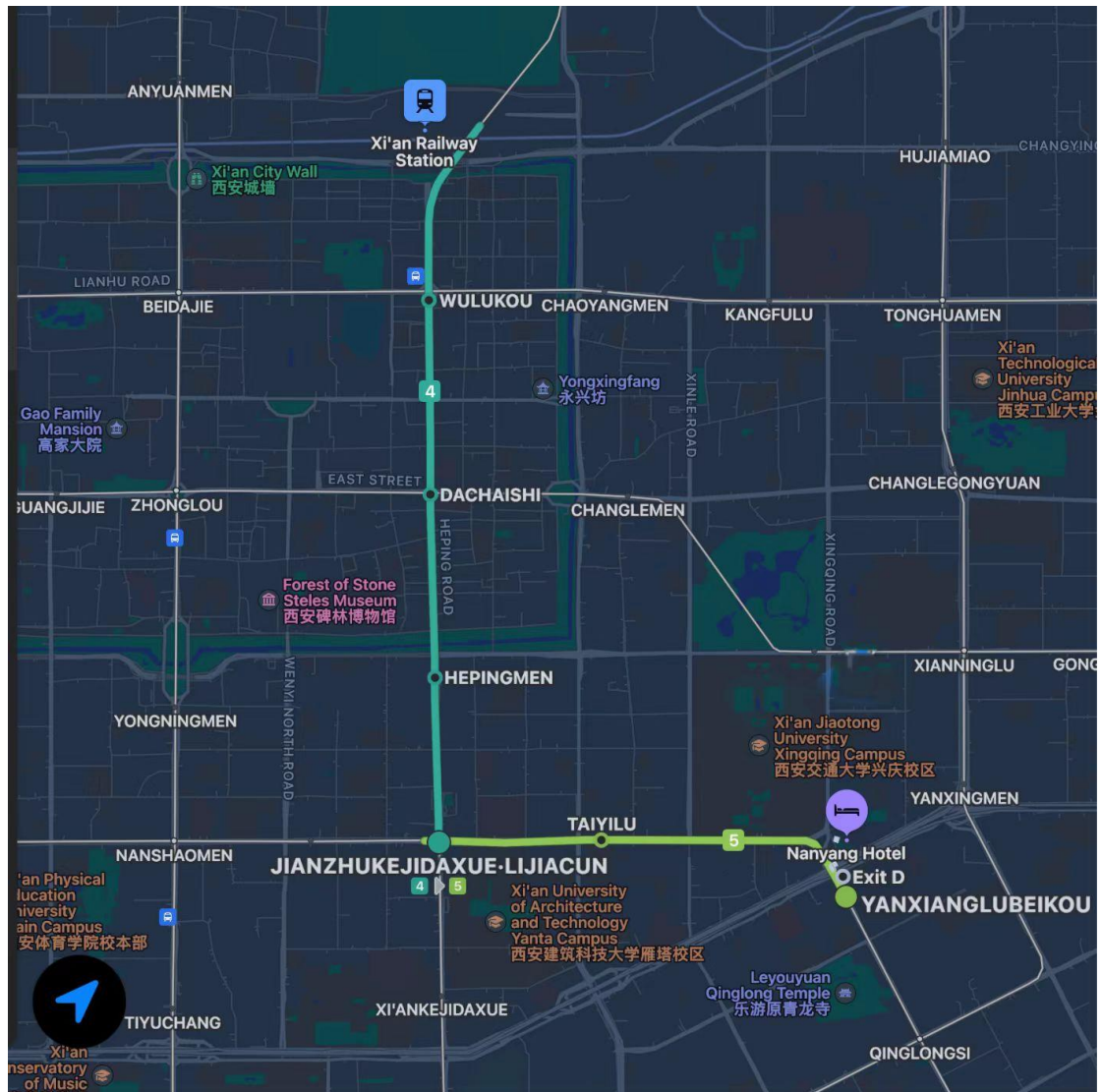
(1) Taxi



(2) Bus

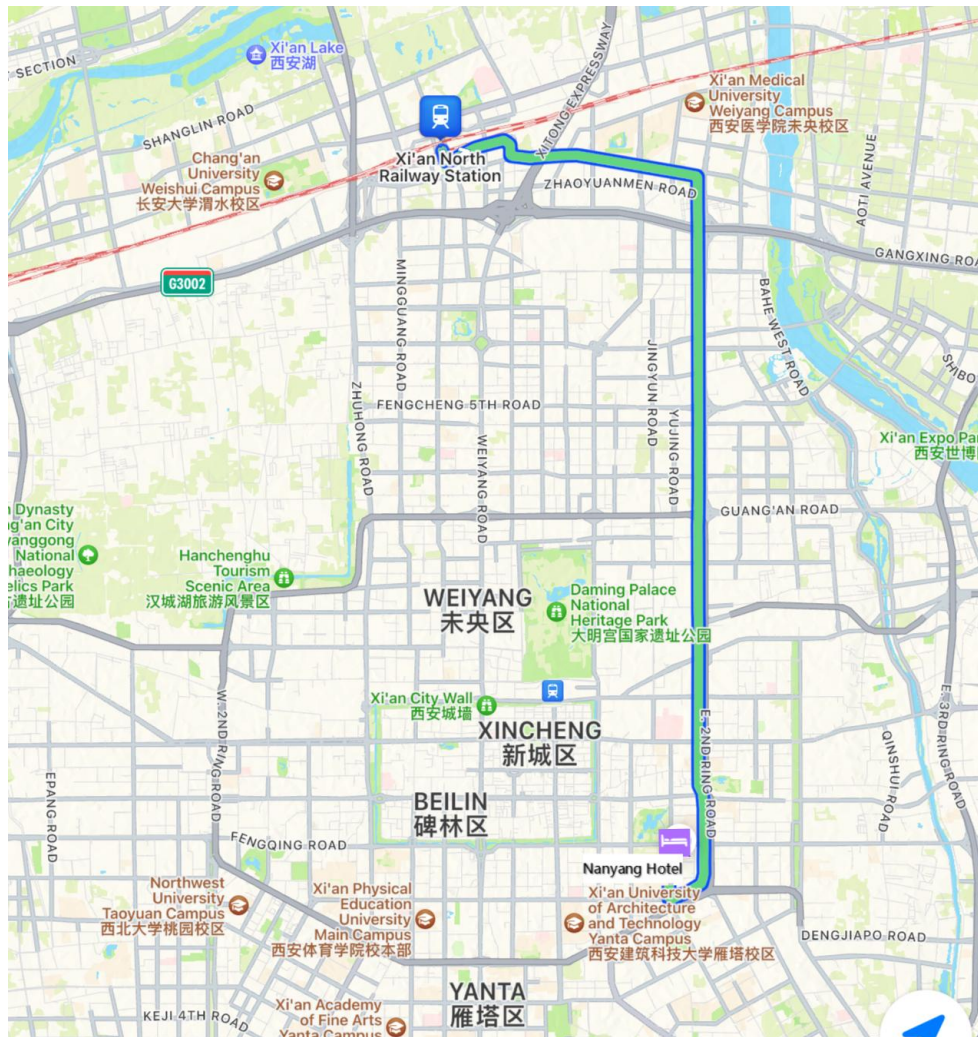


(3) Subway



3. Xi'an North Railway Station

(1) Taxi



(2) Subway

